

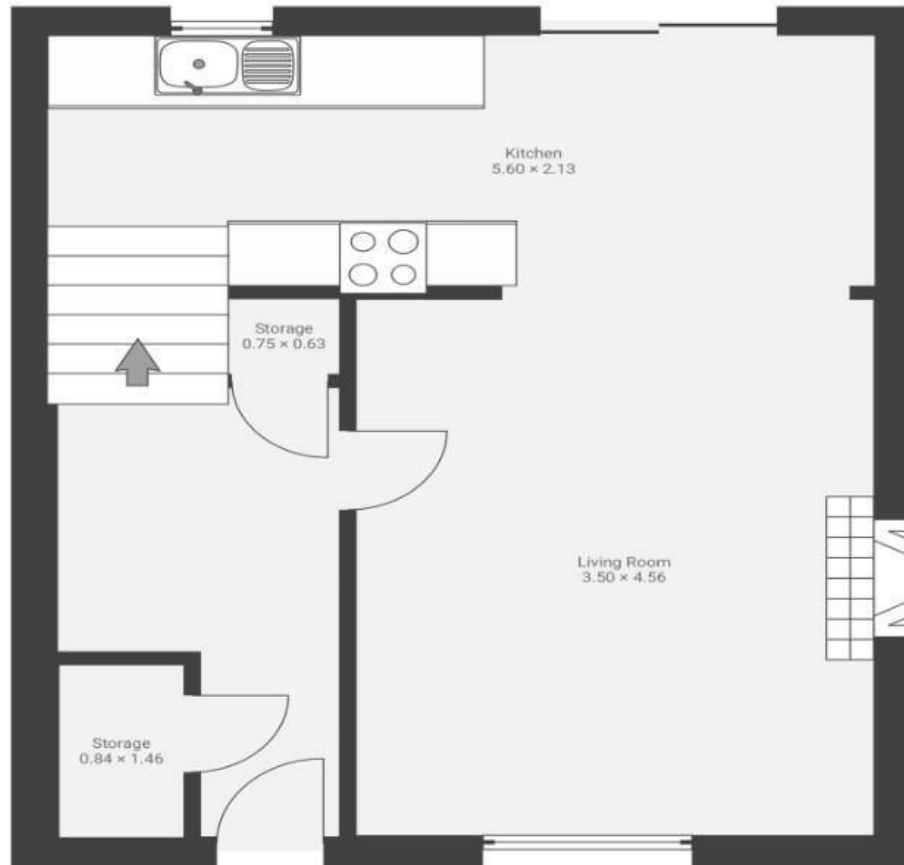
# Ridgeway Road

## FISHPONDS

APPROXIMATE FLOOR AREA  
79.0 SQM / 850 SQFT



GROUND FLOOR



FIRST FLOOR



**Boardwalk**

# Ridgeway Road , BRISTOL

£

£340,000



BS16 3LA

zzz

3 Bedrooms



1 Bathrooms

*The property is really well connected, with the Bristol to Bath cycle path just down the road. It's also a 5 minute walk to multiple supermarkets, Fishponds High Street with lovely cafes like Fed, Porto Lounge and the Crafty Egg, and a short trip from home of Bristol's best walks; Oldbury Court, Snuff Mills, Eastville Park and Stoke Park! The house itself is very light and bright, and we especially enjoy the open plan living downstairs, and the large garden."*

